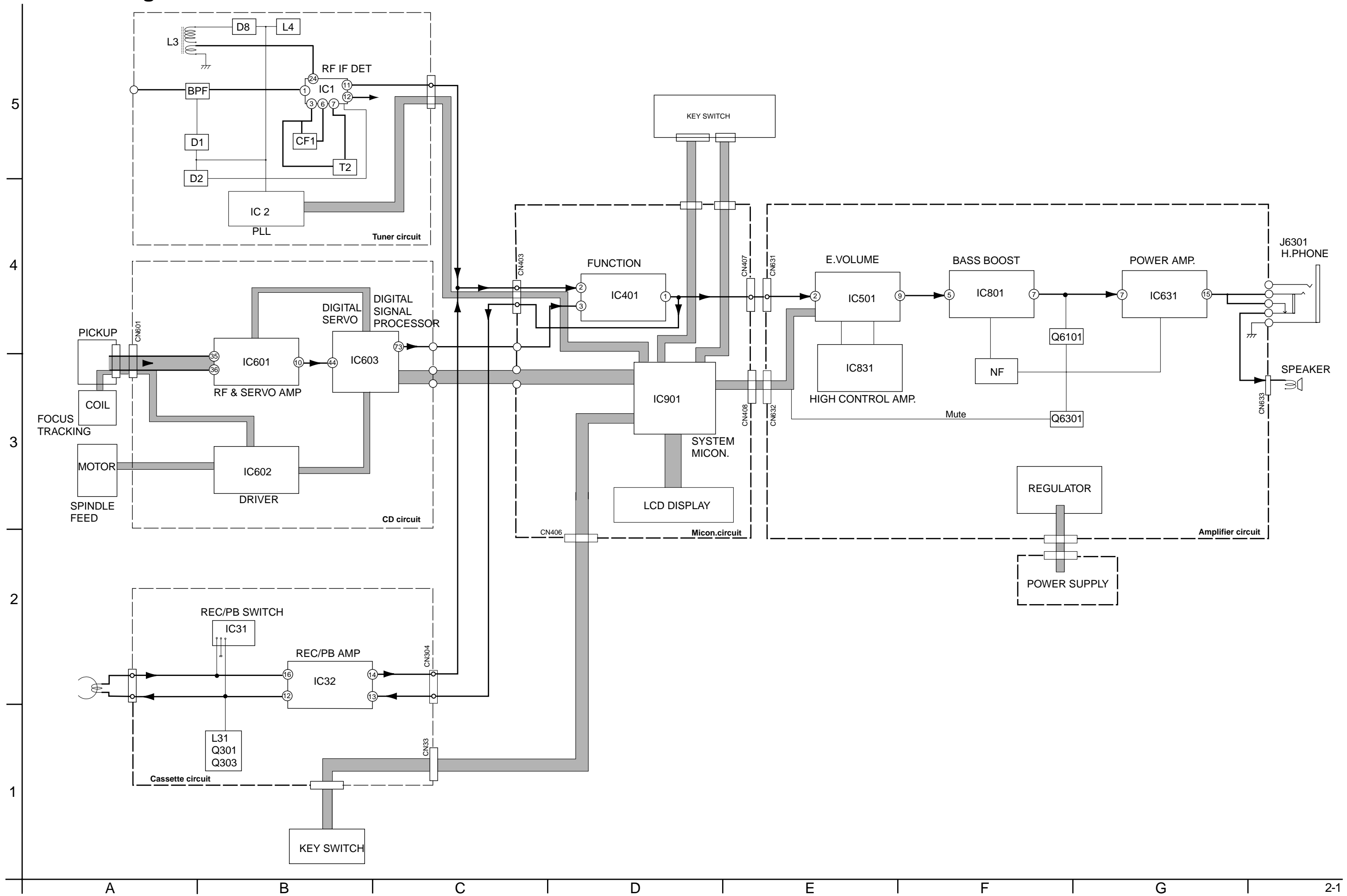


# Block diagram



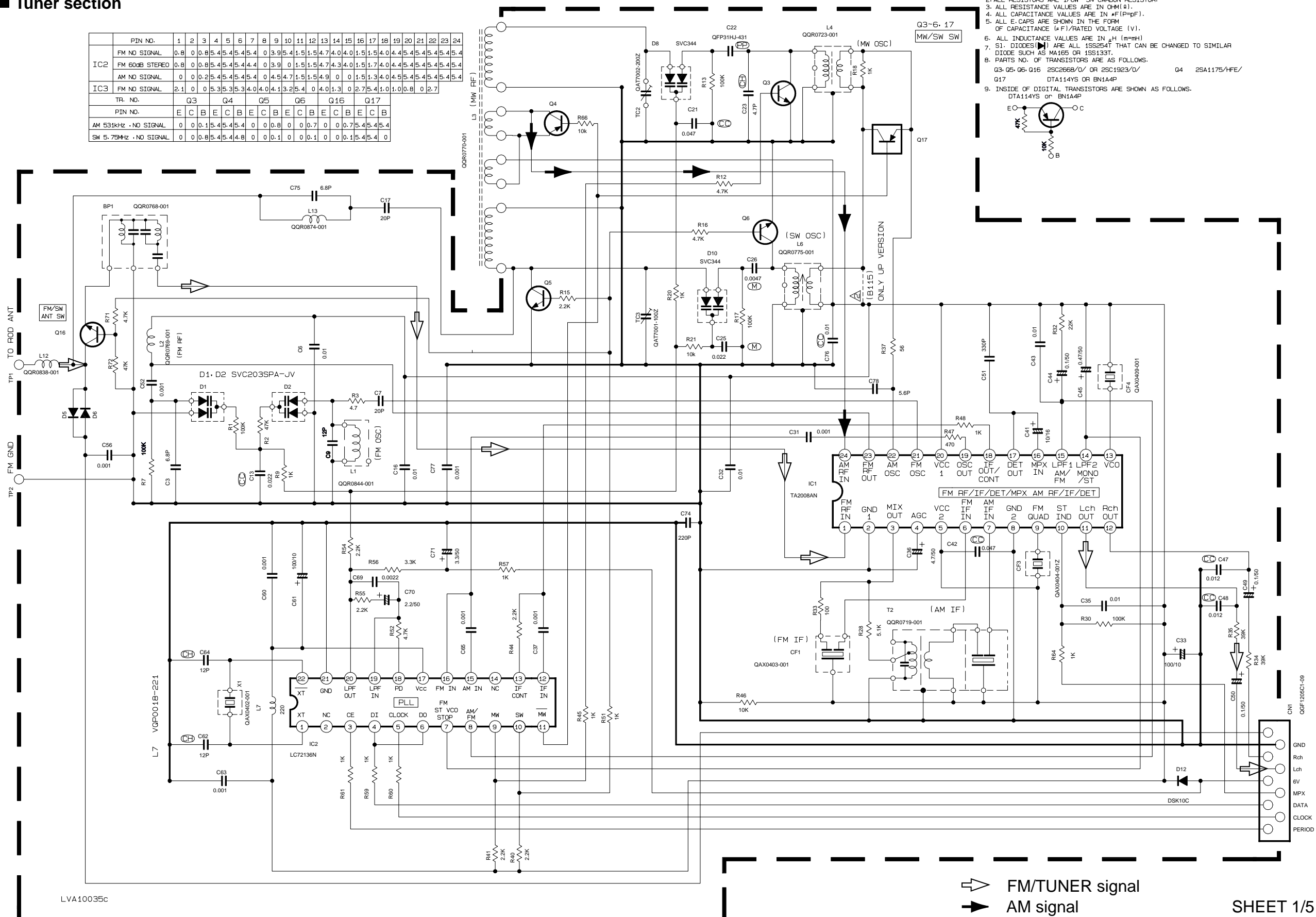
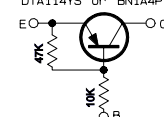
# Standard schematic diagrams

## Tuner section

PIN NO.	1	2	3	4	5	6	7	8	9	10	11	12	13	14	15	16	17	18	19	20	21	22	23	24
IC2	FM NO SIGNAL	0.8	0	0.8	5.4	5.4	5.4	5.4	0	3.9	5.4	1.5	4.7	4.0	4.0	1.5	1.5	4.0	4.4	5.4	5.4	5.4	5.4	5.4
IC3	FM NO SIGNAL	2.1	0	0	2.5	4.4	5.4	5.4	0	4.5	4.7	1.5	1.5	4.9	0	0	1.5	1.3	4.0	4.5	5.4	5.4	5.4	5.4
TR. NO.	Q3	Q4	Q5	Q6	Q16	Q17																		
PIN NO.	E	C	B	E	C	B	E	C	B	E	C	B	E	C	B	E	C	B						
AM 531KHz · NO SIGNAL	0	0	0.1	5.4	5.4	5.4	0	0	0.8	0	0	0.7	0	0	0.7	5.4	5.4	5.4						
SW 5.75MHz · NO SIGNAL	0	0	0.8	5.4	5.4	4.8	0	0	0.1	0	0	0.1	0	0	0.1	5.4	5.4	5.4						

NOTES

- VOLTAGES ARE DC-MEASURED WITH A DIGITAL VOLT METER
- ALL RESISTORS ARE 1/6W 5% CARBON RESISTOR.
- ALL RESISTANCE VALUES ARE IN OHM(Ω).
- ALL CAPACITANCE VALUES ARE IN pF(pF).
- ALL E. CAPS ARE SHOWN IN THE FORM OF CAPACITANCE (pF)/RATED VOLTAGE (V).
- ALL INDUCTANCE VALUES ARE IN μH (μH)
- S1. DIODES (D1) ARE ALL 1SS254T THAT CAN BE CHANGED TO SIMILAR DIODE SUCH AS MA165 OR 1SS133T.
- PARTS NO. OF TRANSISTORS ARE AS FOLLOWS:  
Q3-Q5-Q6-Q16 2SC2668/O/ OR 2SC1923/O/  
Q17 DTA114YS OR 8N144P
- INSIDE OF DIGITAL TRANSISTORS ARE SHOWN AS FOLLOWS.  
DTA114YS OR 8N144P



FM/TUNER signal  
 AM signal

SHEET 1/5

TO MICOM PMB: CN403 (VDH5232-007SV)

SHEET 3/5

LVA10035c

OGF1205C1-09

5

4

3

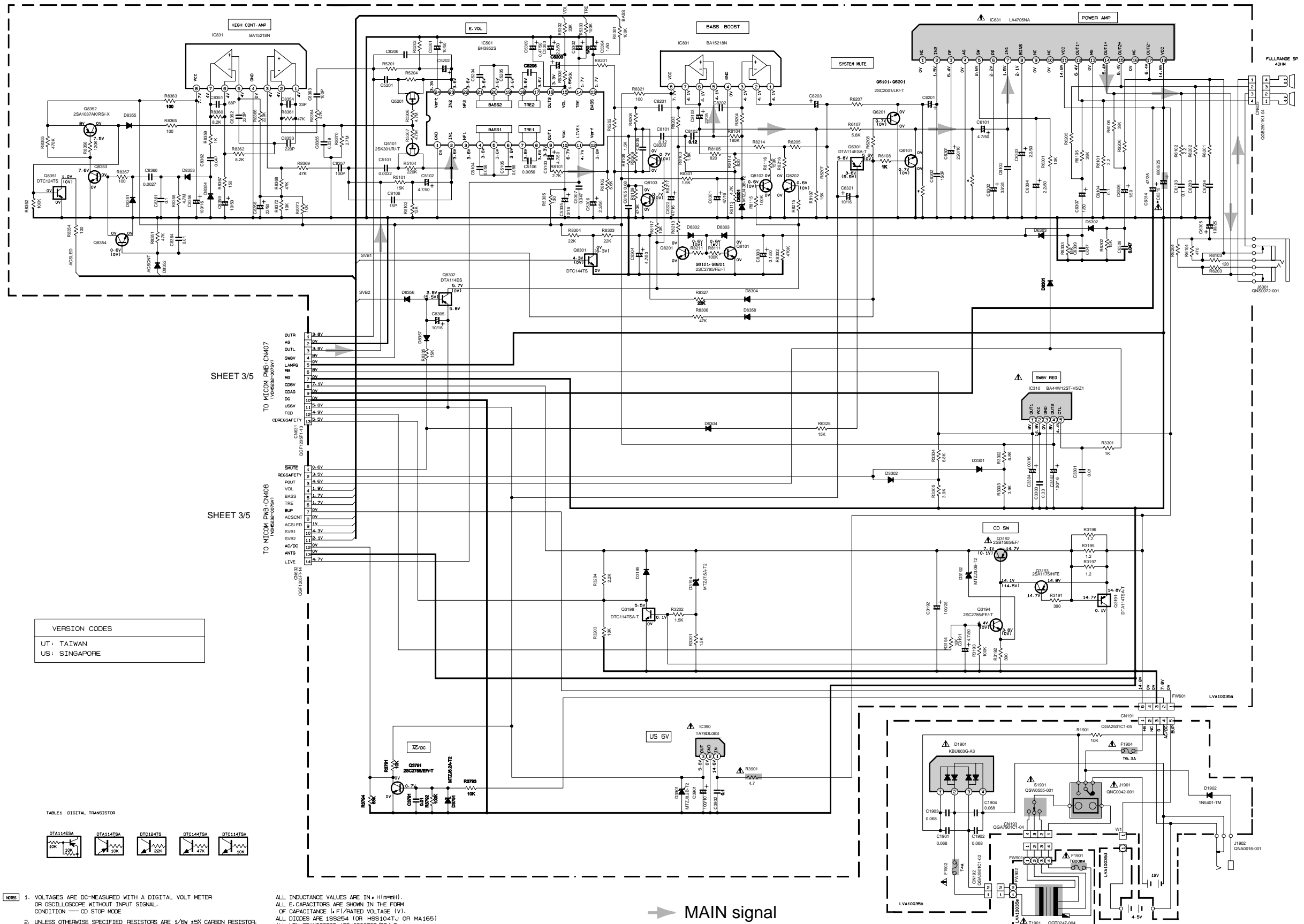
2

1

A B C 2-2 D E F G H

■ Main amplifier section

5  
4  
3  
2  
1



SHEET 3/5  
TO MICOM PWB: CN407  
(1000000-000001)

SHEET 3/5  
TO MICOM PWB: CN408  
(1000000-000001)

VERSION CODES

UT: TAIWAN
US: SINGAPORE

TABLE1: DIGITAL TRANSISTOR

--	--	--	--	--

NOTES

- VOLTAGES ARE DC-MEASURED WITH A DIGITAL VOLT METER OR OSCILLOSCOPE WITHOUT INPUT SIGNAL. CONDITION --- CD STOP MODE
- UNLESS OTHERWISE SPECIFIED RESISTORS ARE 1/8W ±5% CARBON RESISTOR. ALL RESISTANCE VALUES ARE IN OHM(+).

ALL INDUCTANCE VALUES ARE IN μH(m≠mH). ALL E-CAPACITORS ARE SHOWN IN THE FORM OF CAPACITANCE (μ, F)/RATED VOLTAGE (V). ALL DIODES ARE 1SS254 (OR HSS104T/J OR MA165) UNLESS OTHERWISE SPECIFIED.

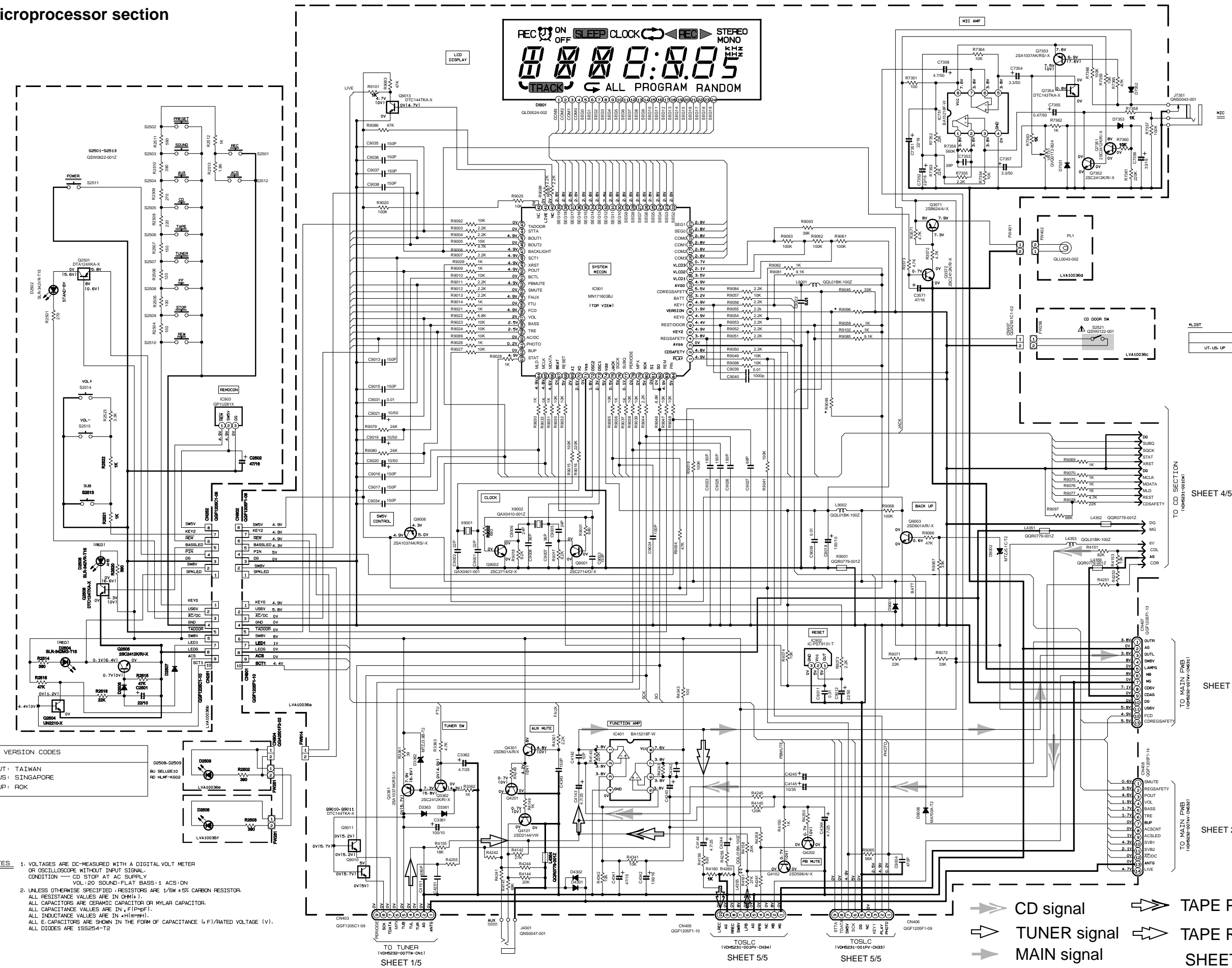
ALL NPN TRANSISTORS ARE 2SC2785/FE/-T UNLESS OTHERWISE SPECIFIED.

ALL PNP TRANSISTORS ARE 2SA1175/HFE/-T UNLESS OTHERWISE SPECIFIED.

➔ MAIN signal

System microprocessor section

5  
4  
3  
2  
1



VERSION CODES  
 UT: TAIWAN  
 US: SINGAPORE  
 UP: ROK

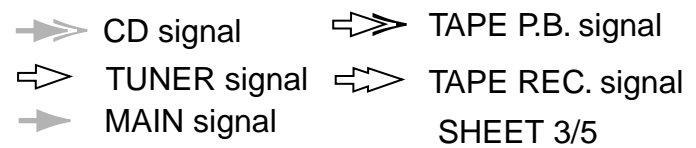
- NOTES
- VOLTAGES ARE DC-MEASURED WITH A DIGITAL VOLT METER OR OSCILLOSCOPE WITHOUT INPUT SIGNAL. CONDITION --- CD STOP AT AC SUPPLY. VOL: 20 SOUND-FLAT BASS: 1 ACS: ON.
  - UNLESS OTHERWISE SPECIFIED, RESISTORS ARE 1/16W ±5% CARBON RESISTOR. ALL RESISTANCE VALUES ARE IN Ω (MΩ). ALL CAPACITORS ARE CERAMIC CAPACITOR OR MYLAR CAPACITOR. ALL CAPACITANCE VALUES ARE IN pF (µF). ALL INDUCTANCE VALUES ARE IN mH (µH). ALL C-CAPACITORS ARE SHOWN IN THE FORM OF CAPACITANCE (F)/RATED VOLTAGE (V). ALL DIODES ARE 1SS254-T2.

4L1ST		
UT-US-UP	R0096	R0099
	6K	100K

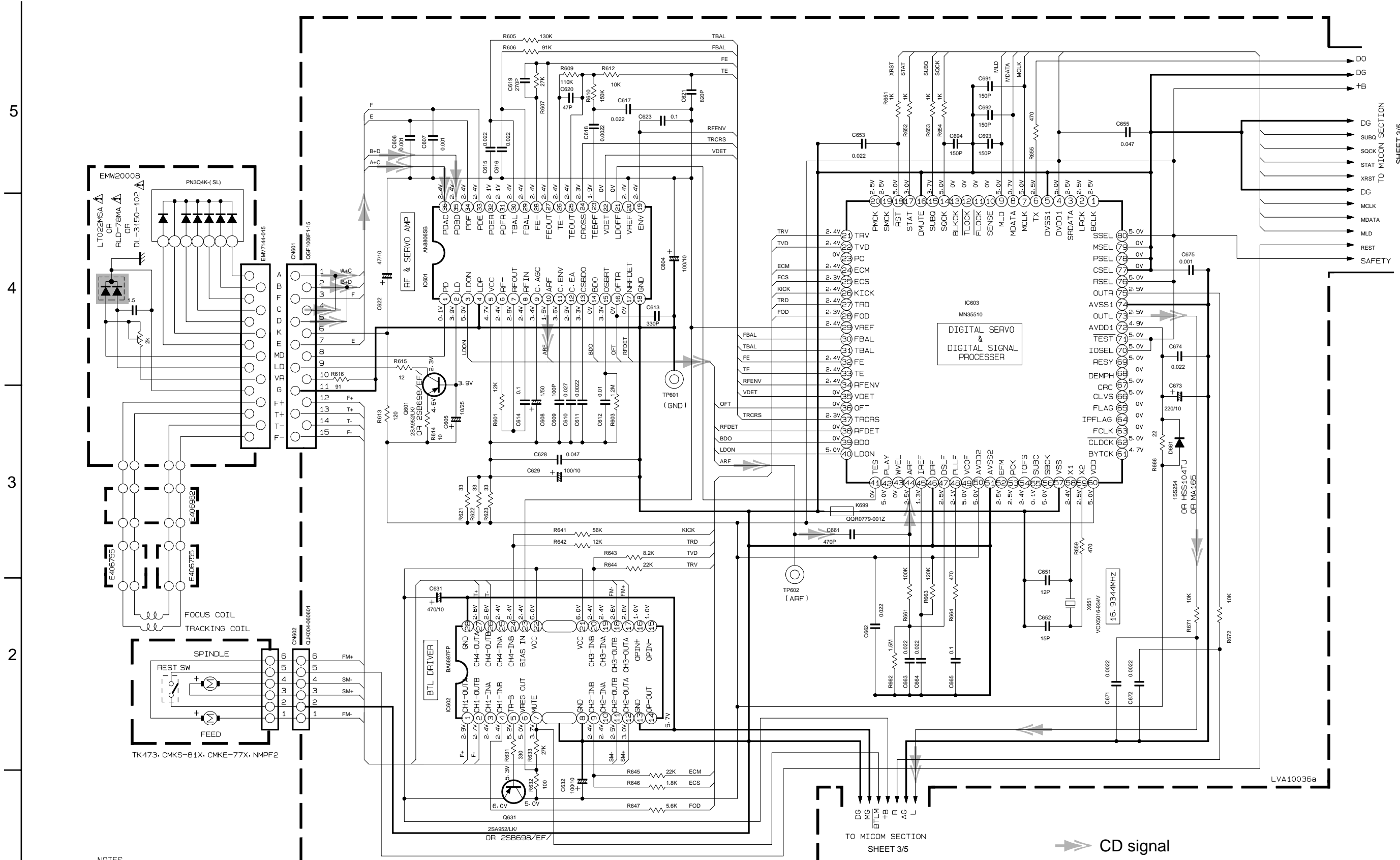
SHEET 4/5

SHEET 2/5

SHEET 2/5



CD servo section



NOTES

1. VOLTAGES ARE DC-MEASURED WITH A DIGITAL VOLT METER
2. UNLESS OTHERWISE SPECIFIED, RESISTORS ARE 1/6W ±5% CARBON RESISTOR. ALL RESISTANCE VALUES ARE IN OHM(Ω). ALL CAPACITORS ARE CERAMIC CAPACITOR OR MYLAR CAPACITOR. ALL CAPACITANCE VALUES ARE IN # F(P=pF). ALL E-CAPACITORS ARE SHOWN IN THE FORM OF CAPACITANCE (#F)/RATED VOLTAGE (V).

SHEET 3/5

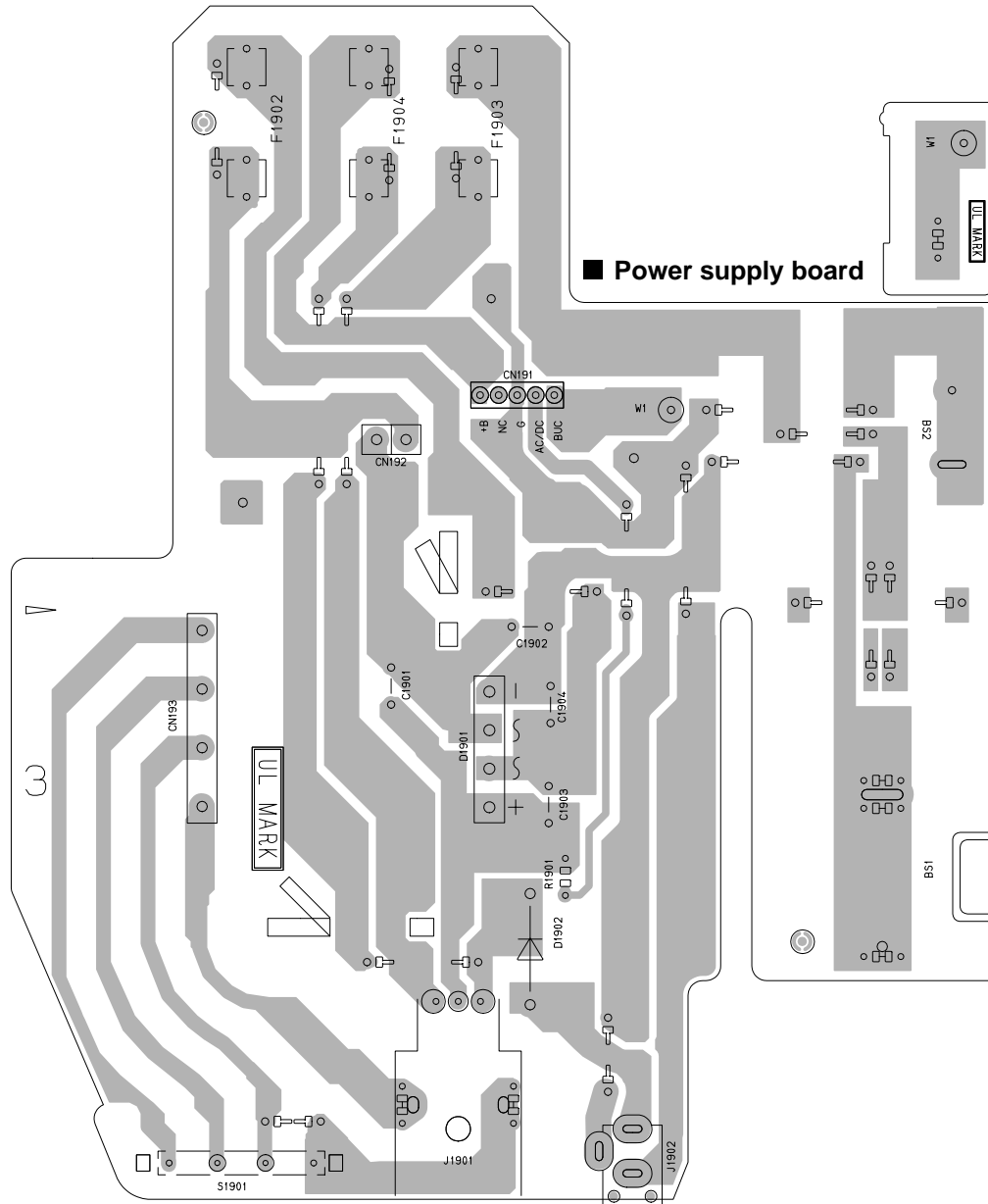
CD signal

TO MICOM SECTION SHEET 3/5



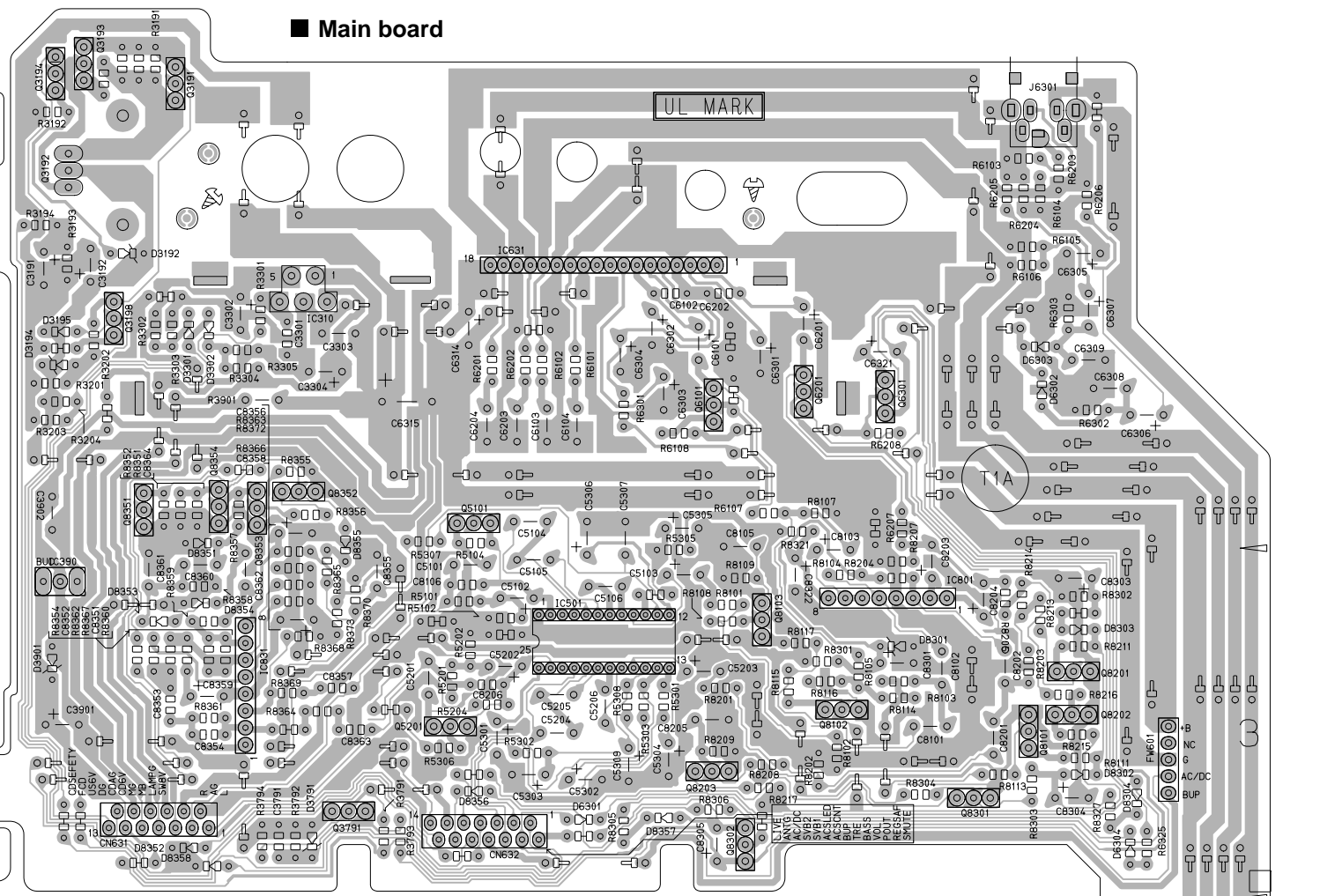
# Printed circuit boards

■ Main board



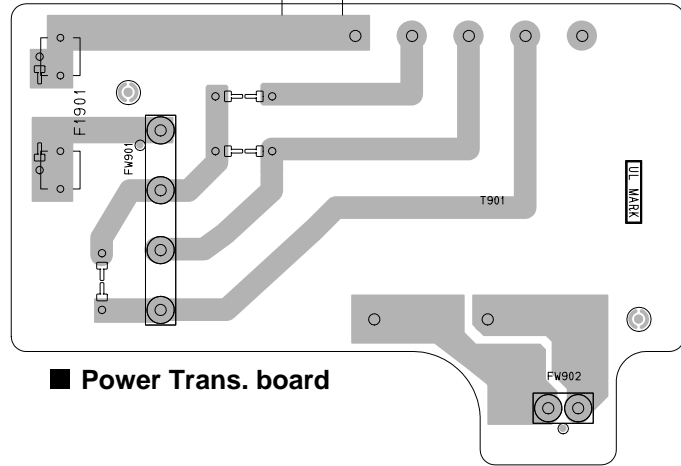
■ Power supply board

■ Main board



■ Tuner board

■ Power Trans. board



5

4

3

2

1

A

B

C

D

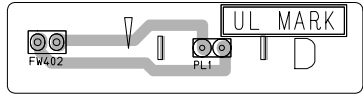
E

F

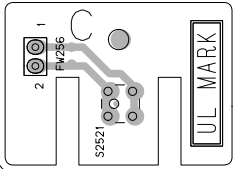
G

SYSTEM CONTROL BOARD Block No. 0 1

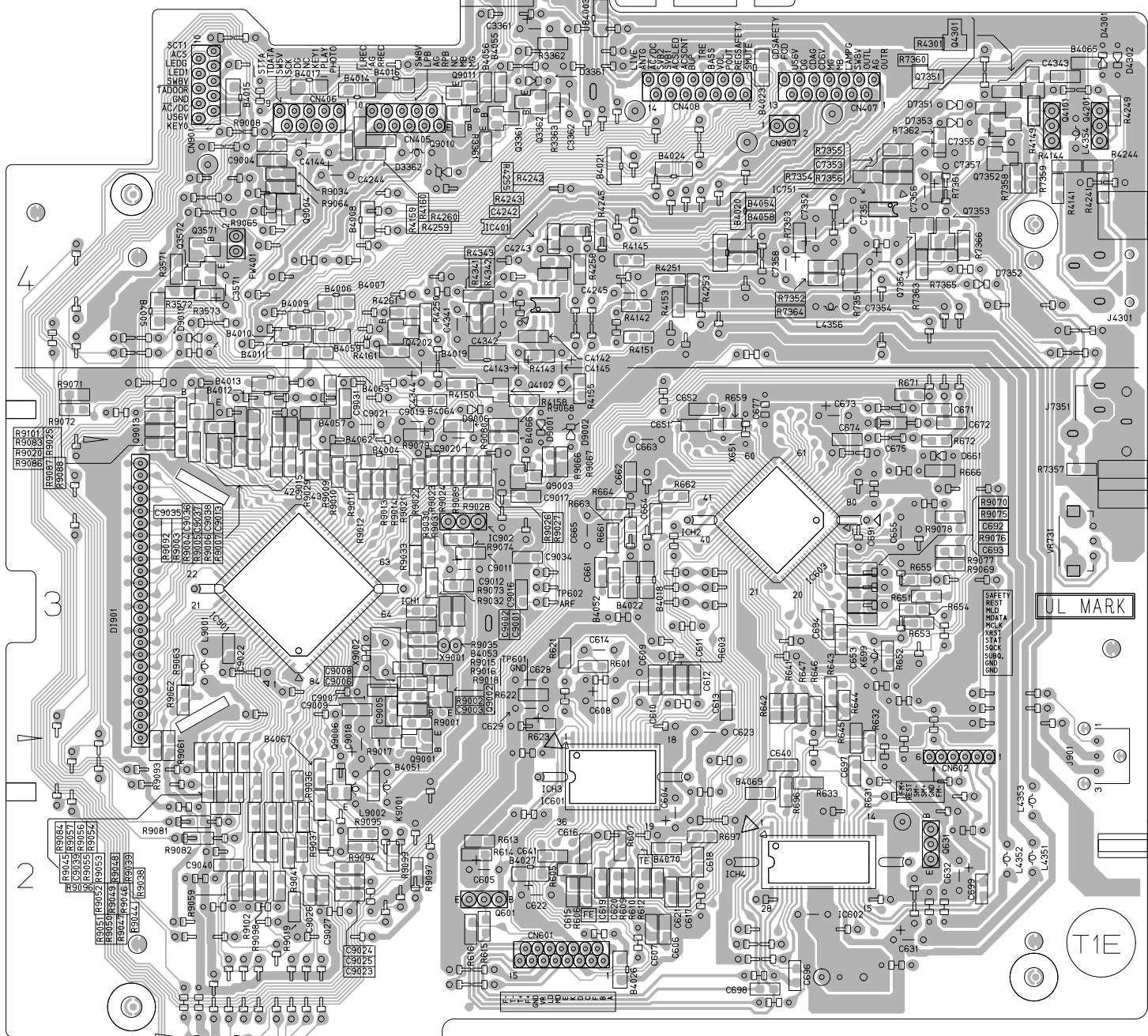
■ Lamp board



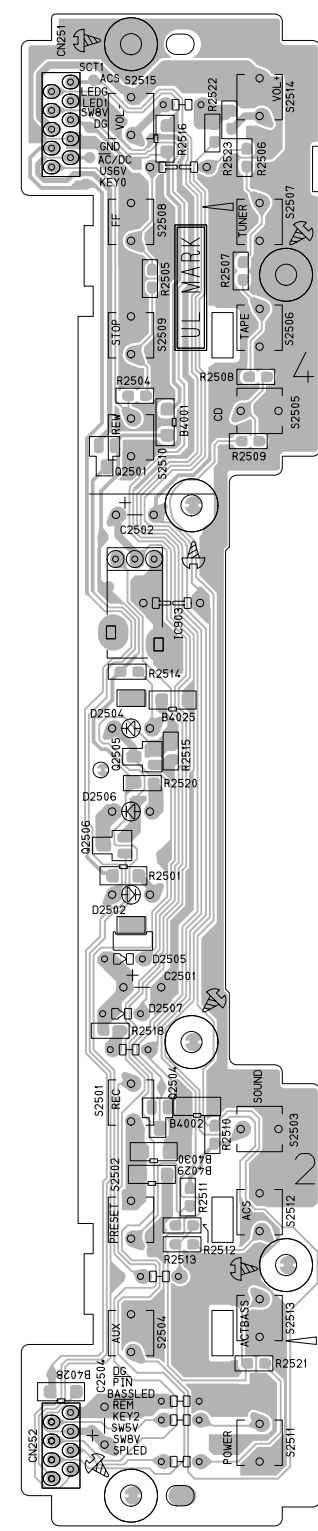
■ CD Door switch board



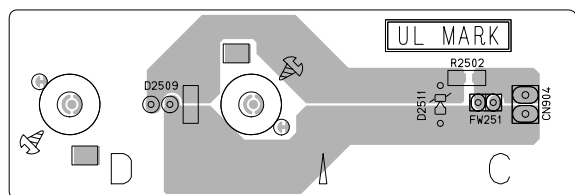
■ System control board



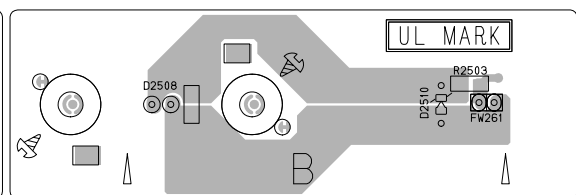
■ Key switch board



■ LED board (Left side)



■ LED board (Right side)

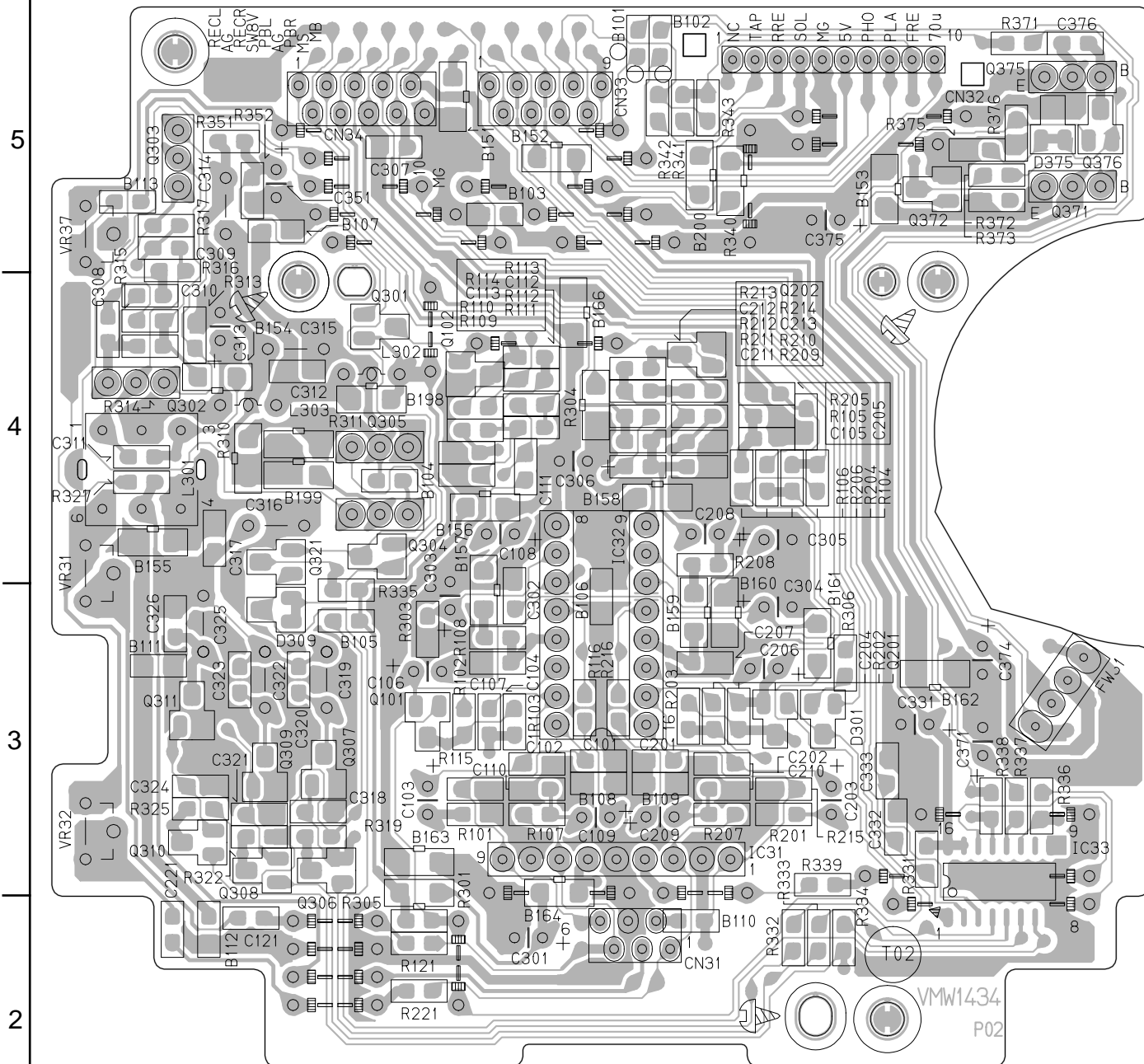


5  
4  
3  
2  
1

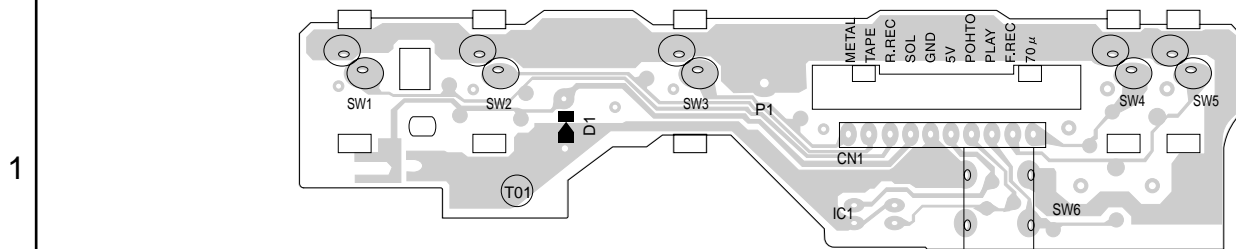
A B C 2-8 D E F G H



■ Head amplifier & mechanism board



■ Cassette switch board



**-MEMO-**